

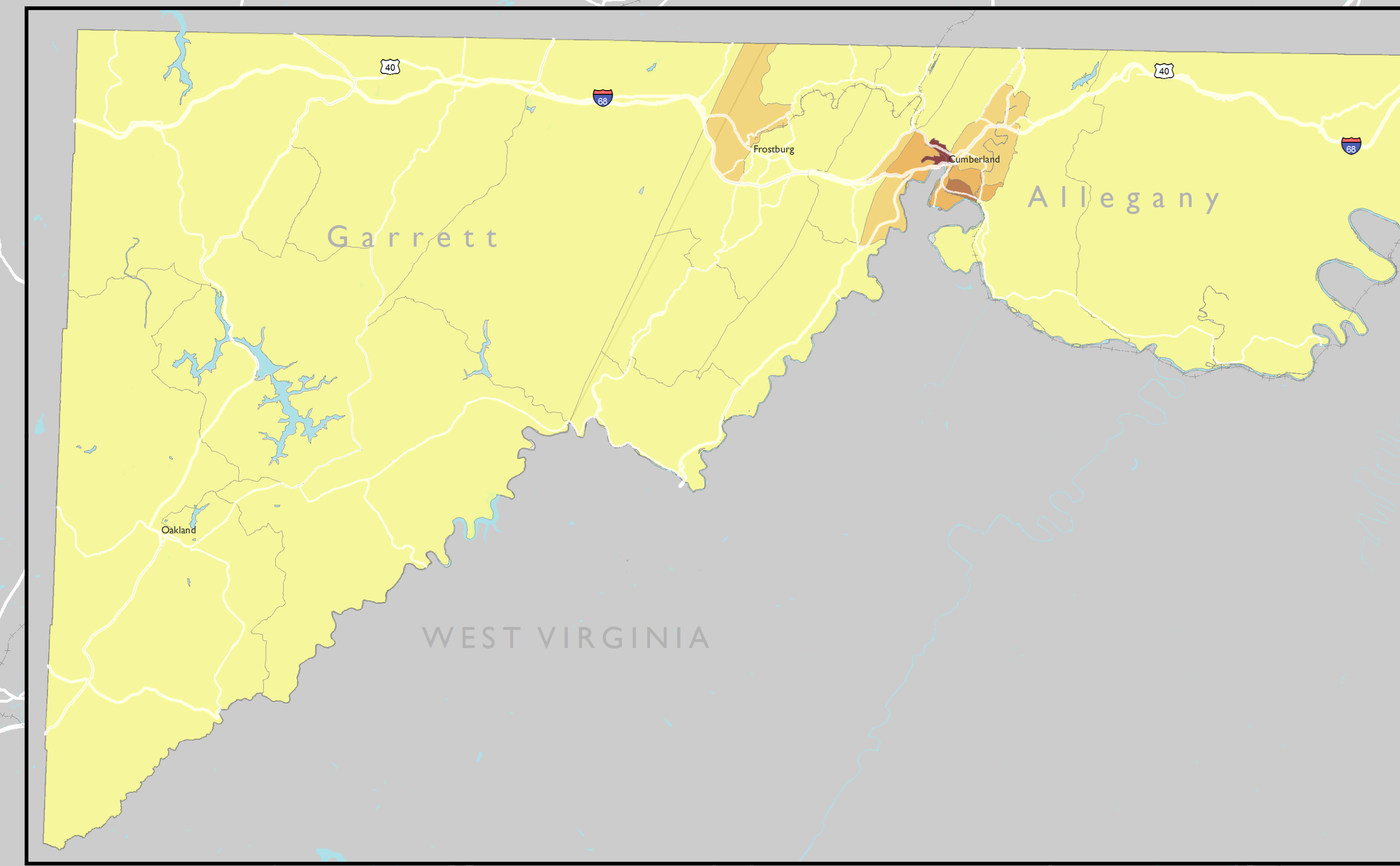
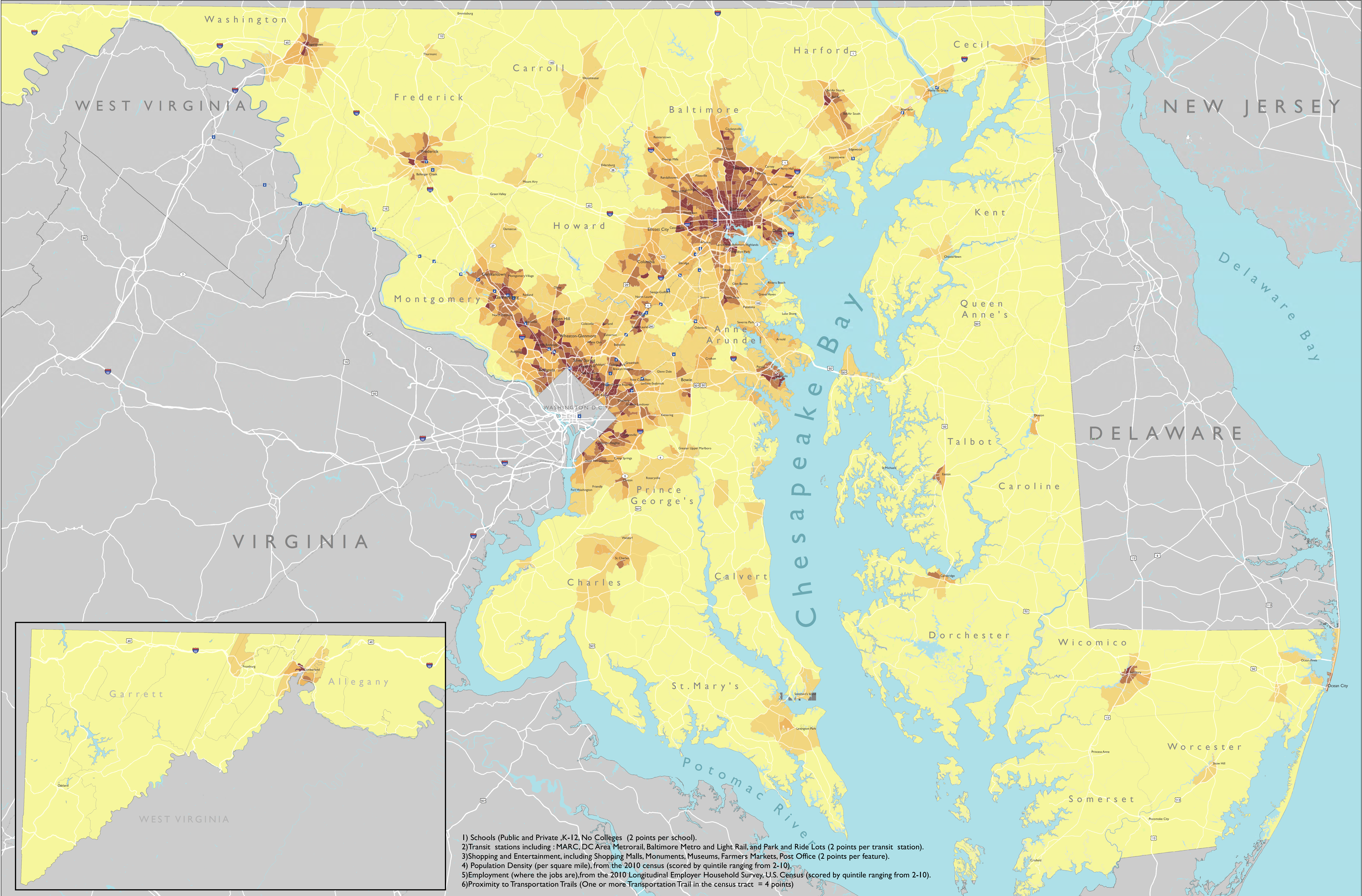
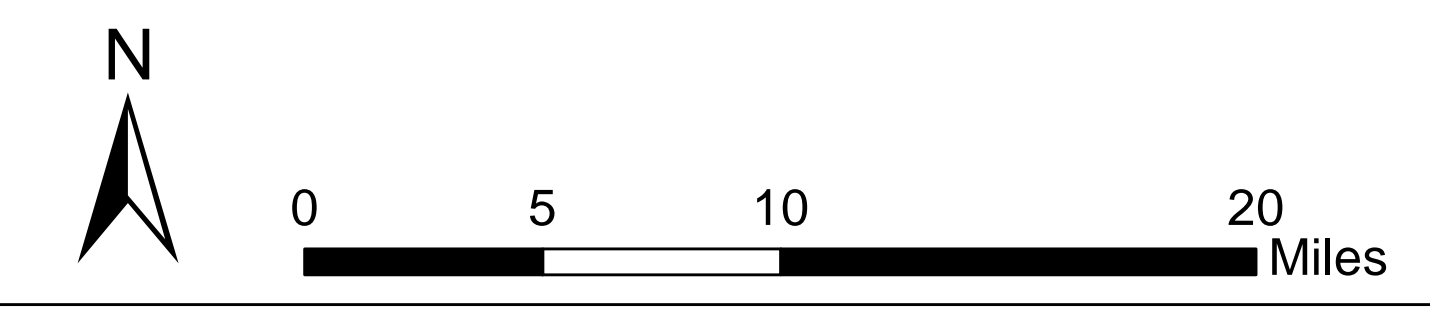
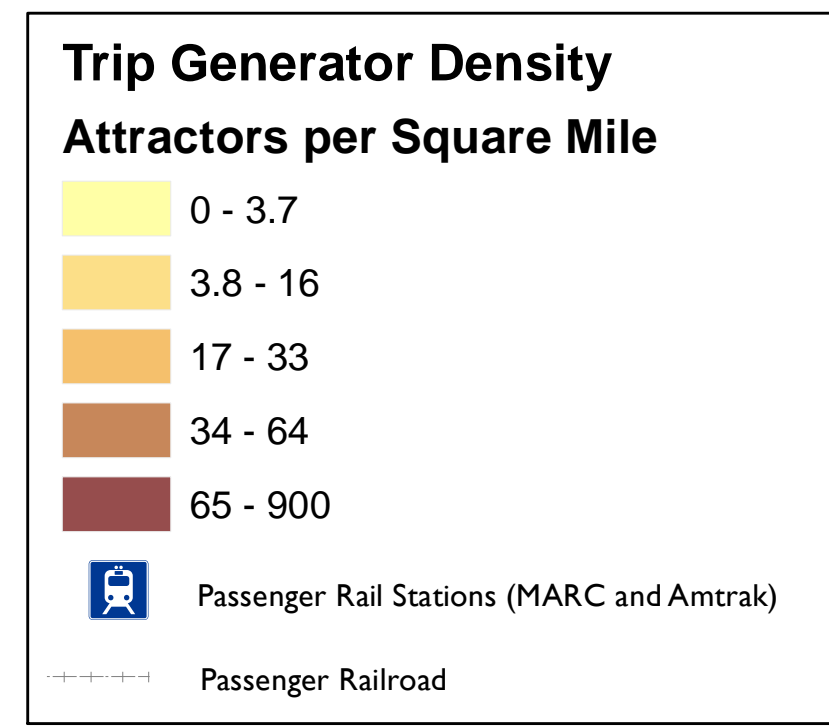
Trip Generator Density

Maryland Bicycle and Pedestrian Master Plan Update 2013

Preliminary Analysis

Public Meeting #1: March 21, 2013

Data Source: American Community Survey, 2010 Census, and 2010 Longitudinal Employer-Household Dynamics



- 1) Schools (Public and Private ,K-12, No Colleges (2 points per school).
- 2) Transit stations including :MARC, DC Area Metrorail, Baltimore Metro and Light Rail, and Park and Ride Lots (2 points per transit station).
- 3) Shopping and Entertainment, including Shopping Malls, Monuments, Museums, Farmers Markets, Post Office (2 points per feature).
- 4) Population Density (per square mile), from the 2010 census (scored by quintile ranging from 2-10).
- 5) Employment (where the jobs are),from the 2010 Longitudinal Employer Household Survey, U.S.Census (scored by quintile ranging from 2-10).
- 6) Proximity to Transportation Trails (One or more Transportation Trail in the census tract = 4 points)