

Pedestrian Crashes and Fatalities - 2006 through 2011

Maryland Bicycle and Pedestrian Master Plan Update 2013

Preliminary Analysis

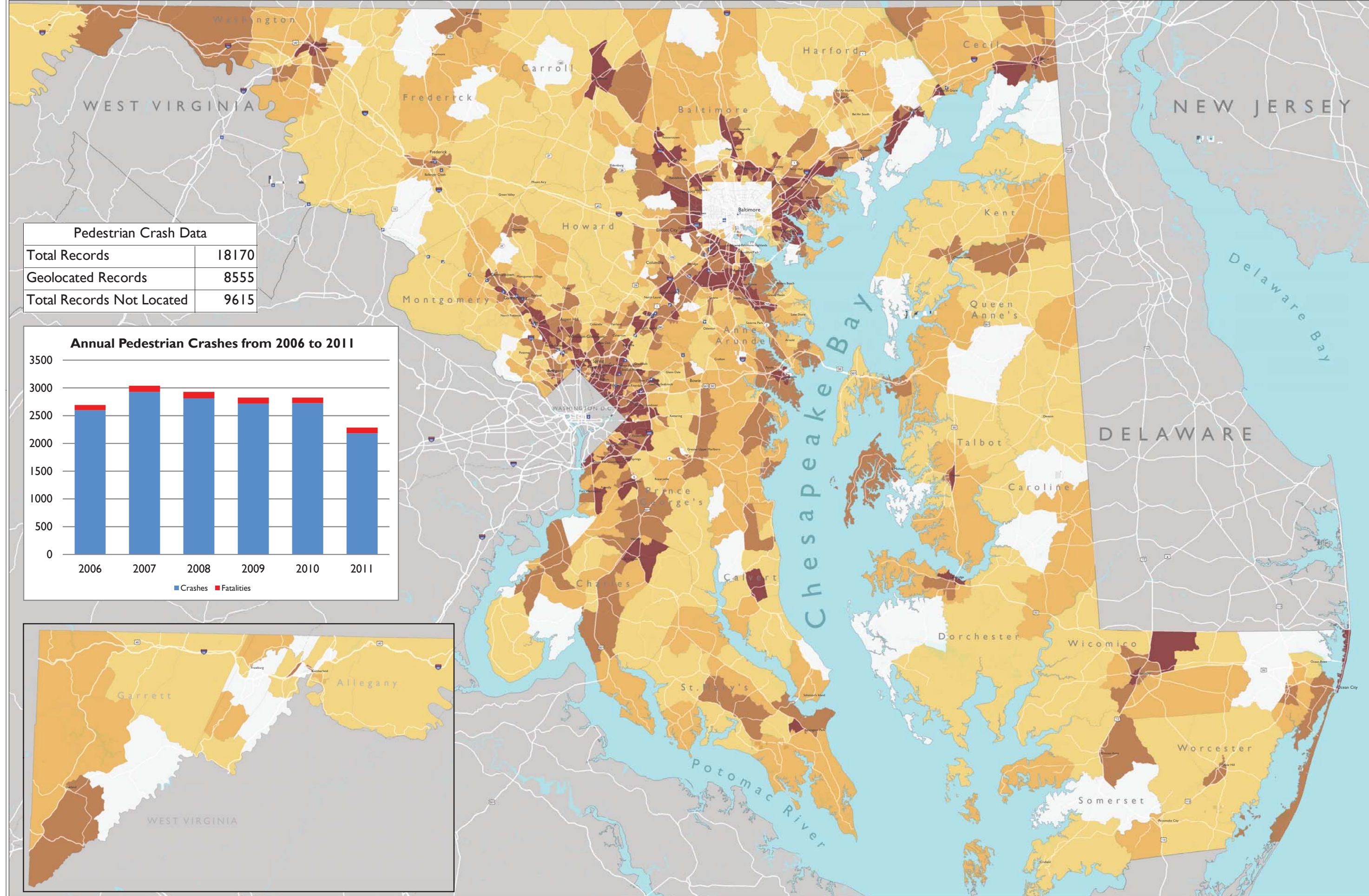
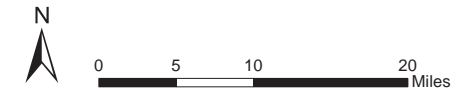
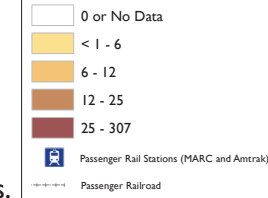
Public Meeting #1: March 21, 2013

Data Source: Maryland Automated Accident Reporting System (MAARS)

Data only includes crashes documented in Police Reports

The data has not been verified on a site specific basis and may contain inaccuracies.

Pedestrian Crashes per 10,000 People



Pedestrian Crash Data	
Total Records	18170
Geolocated Records	8555
Total Records Not Located	9615

